

# UNITED STATES DEPARTMENT OF **COMMERCE** **NEWS**

WASHINGTON, D.C. 20230

ECONOMICS  
AND  
STATISTICS  
ADMINISTRATION

Bureau of  
Economic Analysis

FOR WIRE TRANSMISSION: 9:00 A.M. EDT, TUESDAY, SEPTEMBER 12, 2000

Duke Tran: (202) 606-5344 (Analysis)  
Kathy Albetski: 606-5360 (Estimates)

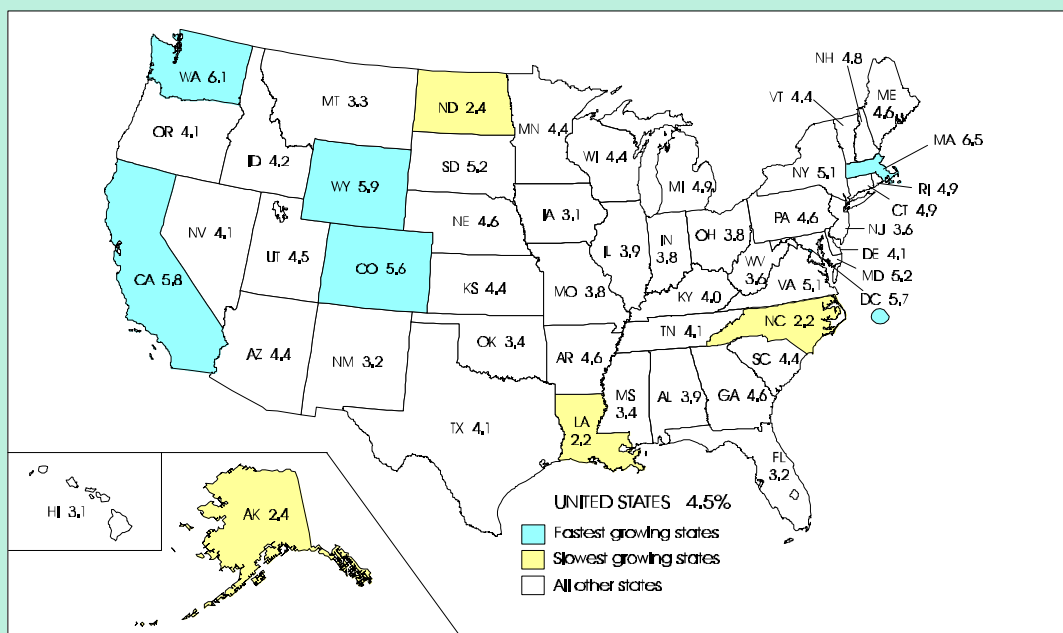
BEA 00-27

## 1999 STATE PER CAPITA PERSONAL INCOME (Revised)

Massachusetts and four western states — Washington, Wyoming, California, and Colorado — had the fastest growth in per capita personal income in the nation in 1999, according to revised estimates released by the Bureau of Economic Analysis (BEA), Commerce Department.

For the nation, per capita income grew 4.5 percent in 1999 to \$28,542, after growing 5.6 percent in 1998 (see table 1). In 46 states, per capita income grew less in 1999 than in 1998. Prices paid by U.S. consumers (as measured by the price index for personal consumption expenditures) increased 1.8 percent in 1999 after increasing 1.1 percent in 1998. All 50 states and the District of Columbia had growth rates in per capita income that were above the increases in prices in both 1998 and 1999.

Per Capita Personal Income Growth in 1999



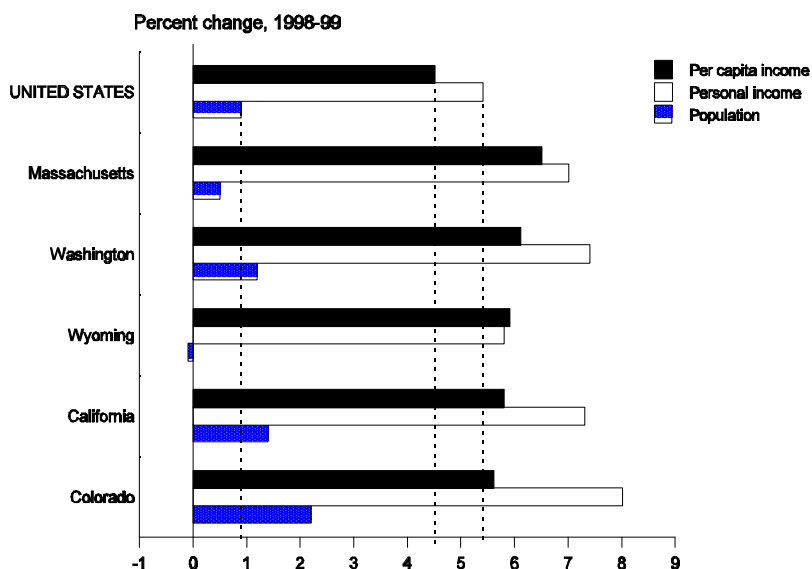
U.S. Department of Commerce, Bureau of Economic Analysis

### State per capita income growth in 1999

**Fastest growing states.**— In 1999, the five states with the fastest growth in per capita income were Massachusetts (6.5 percent), Washington (6.1 percent), Wyoming (5.9 percent), California (5.8 percent), and Colorado (5.6 percent). Except for Wyoming, these states had per capita incomes above the U.S. average of \$28,542.

In all five states, growth rates in personal income exceeded the U.S. average of 5.4 percent. In Washington, California, and Colorado, growth rates in population exceeded the U.S. average of 0.9 percent; population declined in Wyoming and grew at below-average rate in Massachusetts (see the chart below).

**Growth in per capita income and components  
for the U.S. and selected states, 1998-99**

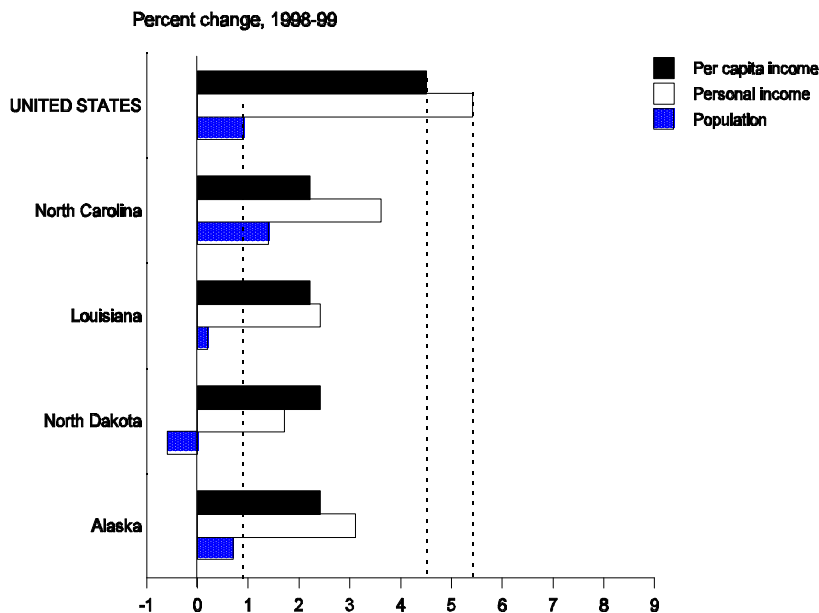


In all five fastest growing states in 1999, net earnings was the major contributor to personal income growth (see table 5, contribution to percent change in personal income, and Definitions on page 5).

**Slowest growing states.**—In 1999, the four states with the slowest growth in per capita income were North Carolina (2.2 percent), Louisiana (2.2 percent), North Dakota (2.4 percent), and Alaska (2.4 percent). Except for Alaska, these states had per capita incomes below the U.S. average of \$28,542.

In all four slowest growing states, personal income grew at below the U.S. average of 5.4 percent, and except in North Carolina, population either declined or grew at below the U.S. average of 0.9 percent.

**Growth in per capita income and components  
for the U.S. and selected states, 1998-99**



In all of the slowest growing states in 1999, personal income growth was held back by slow growth in net earnings. In North Carolina, a substantial decline in dividends, interest, and rent also contributed to the slow growth in personal income; the decline reflected losses resulting from damage caused by Hurricane Floyd.

### Ranking of state per capita income

In 1999, per capita income ranged from \$39,300 in Connecticut to \$20,688 in Mississippi.

The ranking of states by per capita income changed little between 1998 and 1999. Only Wyoming increased more than two positions in rank, and North Carolina and Louisiana declined more than two positions in rank (see table 4).

The 10 states with the highest per capita incomes in 1999 were:

	-----Dol lars-----		-----Rank-----	
	1998	1999	1998	1999
Connecti cut . . . . .	37, 452	39, 300	1	1
Massachusetts . . . . .	33, 394	35, 551	3	2
New Jersey . . . . .	34, 310	35, 551	2	2
New York . . . . .	32, 236	33, 890	4	4
Maryl and . . . . .	30, 850	32, 465	5	5
Col orado . . . . .	29, 860	31, 546	7	6
Ill i nois . . . . .	29, 974	31, 145	6	7
New Hampshi re . . . . .	29, 679	31, 114	9	8
Nevada . . . . .	29, 806	31, 022	8	9
Mi nnesota . . . . .	29, 503	30, 793	11	10

Most of these states had growth rates in per capita income that exceeded the U.S. average of 4.5 percent (table 4).

The 10 states with the lowest per capita incomes in 1999 were:

	-----Dol lars-----		-----Rank-----	
	1998	1999	1998	1999
Kentucky . . . . .	22, 353	23, 237	40	41
Al abama . . . . .	22, 123	22, 987	44	42
OkI ahoma . . . . .	22, 199	22, 953	43	43
Loui si ana . . . . .	22, 352	22, 847	41	44
I daho . . . . .	21, 923	22, 835	45	45
Arkansas . . . . .	21, 260	22, 244	47	46
Montana . . . . .	21, 324	22, 019	46	47
New Mexi co . . . . .	21, 178	21, 853	48	48
West Vi rgi ni a . . . . .	20, 246	20, 966	49	49
Mi ssi ssi ppi . . . . .	20, 013	20, 688	50	50

Except for Arkansas, these states had growth rates in per capita income that were below the U.S. average of 4.5 percent.

## Revisions

The personal income estimates for the nation and states have been revised for 1997-99 to incorporate the annual revision of the national income and product accounts (NIPA's) that was released on August 1, 2000 and newly available state source data that are more complete, more detailed, and otherwise more appropriate than data previously available.

Revisions to the estimates of state personal income for 1997-99 are shown in table 6. For the nation, personal income was revised down 0.2 percent for 1997 and was revised up 0.4 percent for 1998 and 0.1 percent for 1999. For the states, the largest revisions are to the District of Columbia, which was revised up 2.4 percent in 1997, 3.6 percent in 1998, and 4.3 percent in 1999, and to Idaho, which was revised down 0.9 percent in 1997, 0.7 percent in 1998, and 2.6 percent in 1999. For the District of Columbia, upward revisions to dividends, interest, and rent in 1997-99 contributed to the upward revisions to personal income. For Idaho, downward revisions to dividends, interest, and rent in 1997-99, plus a downward revision to farm proprietors' income in 1999 contributed to the downward revisions in personal income.

## Definitions

Personal income is the income received by all persons from participation in production, from government and business transfer payments, and from government interest. Personal income is the sum of net earnings by place of residence, rental income of persons, personal dividend income, personal interest income, and transfer payments. Net earnings is earnings by place of work – the sum of wage and salary disbursements (payrolls), other labor income, and proprietors' income -- less personal contributions for social insurance, plus an adjustment to convert earnings by place of work to a place-of-residence basis. Personal income is measured before the deduction of personal income taxes and other personal taxes and is reported in current dollars (no adjustment is made for price changes).

The estimate of personal income in the United States is derived as the sum of the state estimates; it differs from the estimate of personal income in the national income and product accounts (NIPA's) because of differences in coverage, in the methodologies used to prepare the estimates, and in the timing of the availability of source data.

Per capita personal income is the annual total personal income of residents divided by resident population as of July 1.

\* \* \*

**NOTE:** Revised estimates for earnings by industry for 1997-98 are provided on BEA's Web site, but estimates for 1999 are not available yet. BEA will provide the earnings detail for 1999 on its Web site when the source data become available later this fall. Summary statistics for 1999 and other selected tables that are not affected by the lack of industry detail are available now. Look for updates on BEA's Web site: <[www.bea.doc.gov](http://www.bea.doc.gov)>.

BEA's major national, international, regional, and industry estimates; the Survey of Current Business; and BEA news releases are available without charge on BEA's Web site:

<[www.bea.doc.gov](http://www.bea.doc.gov)>

STAT-USA maintains an Internet site that contains BEA estimates, the Survey of Current Business, and BEA news releases. For information about STAT-USA, go to <[www.stat-usa.gov](http://www.stat-usa.gov)>, or call (202) 482-1986. Subscriptions for single-user unlimited access to STAT-USA's Internet information are \$75.00 for 3 months or \$175.00 for one year.

Summary BEA estimates are available on recorded messages at the time of public release at the following telephone numbers:

(202) 606-5306 Gross domestic product  
606-5303 Personal income and outlays  
606-5362 U.S. international transactions

Most of BEA's estimates and analyses appear in the Survey of Current Business, BEA's monthly journal. The printed Survey of Current Business is available from the Superintendent of Documents, U.S. Government Printing Office, Washington, D.C. 20402. First class mail: Annual subscription \$120.00 domestic. Second class mail: Annual subscription \$48.00 domestic, \$60.00 foreign; single issue \$17.25 domestic, \$21.56 foreign.

\* \* \*

Next state release — October 25, 9:00 AM EDT for  
State Personal Income, Second Quarter 2000

Table 1.—Per Capita Personal Income, by State and Region, 1995-99

[Dollars]

	1995	1996	1997 <sup>r</sup>	1998 <sup>r</sup>	1999 <sup>r</sup>	Percent change				Rank of percent change in 1998-99
						1995-96	1996-97	1997-98	1998-99	
<b>United States</b> .....	<b>23,562</b>	<b>24,651</b>	<b>25,874</b>	<b>27,322</b>	<b>28,542</b>	<b>4.6</b>	<b>5.0</b>	<b>5.6</b>	<b>4.5</b>	.....
<b>New England</b>										
Connecticut .....	31,947	33,472	35,596	37,452	39,300	4.8	6.3	5.2	4.9	10
Maine .....	20,240	21,293	22,305	23,529	24,603	5.2	4.8	5.5	4.6	17
Massachusetts .....	28,051	29,618	31,332	33,394	35,551	5.6	5.8	6.6	6.5	1
New Hampshire .....	25,008	26,042	27,607	29,679	31,114	4.1	6.0	7.5	4.8	13
Rhode Island .....	24,046	25,123	26,631	28,012	29,377	4.5	6.0	5.2	4.9	11
Vermont .....	21,359	22,295	23,362	24,803	25,889	4.4	4.8	6.2	4.4	22
<b>Mideast</b>										
Delaware .....	25,391	26,640	27,405	29,571	30,778	4.9	2.9	7.9	4.1	29
District of Columbia .....	33,045	34,401	36,087	37,714	39,858	4.1	4.9	4.5	5.7	.....
Maryland .....	26,896	27,844	29,222	30,850	32,465	3.5	4.9	5.6	5.2	7
New Jersey .....	29,277	30,795	32,372	34,310	35,551	5.2	5.1	6.0	3.6	38
New York .....	27,721	29,266	30,480	32,236	33,890	5.6	4.1	5.8	5.1	8
Pennsylvania .....	23,738	24,838	26,092	27,358	28,605	4.6	5.0	4.9	4.6	18
<b>Great Lakes</b>										
Illinois .....	25,643	27,005	28,347	29,974	31,145	5.3	5.0	5.7	3.9	33
Indiana .....	21,845	22,775	23,748	25,182	26,143	4.3	4.3	6.0	3.8	36
Michigan .....	23,975	24,447	25,570	26,807	28,113	2.0	4.6	4.8	4.9	12
Ohio .....	22,887	23,613	24,913	26,164	27,152	3.2	5.5	5.0	3.8	37
Wisconsin .....	22,573	23,554	24,790	26,245	27,390	4.3	5.2	5.9	4.4	25
<b>Plains</b>										
Iowa .....	21,181	22,713	23,798	24,844	25,615	7.2	4.8	4.4	3.1	45
Kansas .....	21,889	23,121	24,355	25,687	26,824	5.6	5.3	5.5	4.4	21
Minnesota .....	24,583	26,267	27,548	29,503	30,793	6.9	4.9	7.1	4.4	24
Missouri .....	22,094	23,099	24,252	25,403	26,376	4.5	5.0	4.7	3.8	35
Nebraska .....	22,196	24,045	24,590	25,861	27,049	8.3	2.3	5.2	4.6	16
North Dakota .....	19,084	21,166	20,798	22,767	23,313	10.9	-1.7	9.5	2.4	48
South Dakota .....	19,848	21,736	22,275	23,797	25,045	9.5	2.5	6.8	5.2	6
<b>Southeast</b>										
Alabama .....	19,683	20,329	21,129	22,123	22,987	3.3	3.9	4.7	3.9	34
Arkansas .....	18,546	19,442	20,229	21,260	22,244	4.8	4.0	5.1	4.6	14
Florida .....	23,512	24,616	25,722	26,930	27,780	4.7	4.5	4.7	3.2	44
Georgia .....	22,230	23,586	24,547	26,134	27,340	6.1	4.1	6.5	4.6	15
Kentucky .....	19,215	20,155	21,215	22,353	23,237	4.9	5.3	5.4	4.0	32
Louisiana .....	19,541	20,254	21,209	22,352	22,847	3.6	4.7	5.4	2.2	49
Mississippi .....	17,185	18,044	18,885	20,013	20,688	5.0	4.7	6.0	3.4	41
North Carolina .....	21,938	22,940	24,188	25,454	26,003	4.6	5.4	5.2	2.2	50
South Carolina .....	19,473	20,403	21,385	22,544	23,545	4.8	4.8	5.4	4.4	20
Tennessee .....	21,800	22,450	23,324	24,576	25,574	3.0	3.9	5.4	4.1	31
Virginia .....	24,456	25,495	26,768	28,343	29,789	4.2	5.0	5.9	5.1	9
West Virginia .....	17,913	18,566	19,388	20,246	20,966	3.6	4.4	4.4	3.6	39
<b>Southwest</b>										
Arizona .....	20,634	21,611	22,781	24,133	25,189	4.7	5.4	5.9	4.4	23
New Mexico .....	18,852	19,478	20,233	21,178	21,853	3.3	3.9	4.7	3.2	43
Oklahoma .....	19,394	20,151	21,106	22,199	22,953	3.9	4.7	5.2	3.4	40
Texas .....	21,526	22,557	24,242	25,803	26,858	4.8	7.5	6.4	4.1	28
<b>Rocky Mountain</b>										
Colorado .....	24,865	26,231	27,950	29,860	31,546	5.5	6.6	6.8	5.6	5
Idaho .....	19,630	20,353	20,830	21,923	22,835	3.7	2.3	5.2	4.2	26
Montana .....	18,764	19,383	20,167	21,324	22,019	3.3	4.0	5.7	3.3	42
Utah .....	18,858	19,955	21,156	22,294	23,288	5.8	6.0	5.4	4.5	19
Wyoming .....	21,514	22,098	23,820	24,927	26,396	2.7	7.8	4.6	5.9	3
<b>Far West</b>										
Alaska .....	25,798	26,057	27,042	27,904	28,577	1.0	3.8	3.2	2.4	47
California .....	24,496	25,563	26,759	28,280	29,910	4.4	4.7	5.7	5.8	4
Hawaii .....	25,584	25,661	26,241	26,725	27,544	.3	2.3	1.8	3.1	46
Nevada .....	25,808	27,142	28,201	29,806	31,022	5.2	3.9	5.7	4.1	30
Oregon .....	22,668	23,649	24,845	25,958	27,023	4.3	5.1	4.5	4.1	27
Washington .....	23,878	25,287	26,817	28,632	30,392	5.9	6.1	6.8	6.1	2
<b>BEA regions</b>										
New England.....	27,426	28,820	30,510	32,365	34,173	5.1	5.9	6.1	5.6	1
Mideast.....	26,856	28,201	29,511	31,161	32,628	5.0	4.6	5.6	4.7	4
Great Lakes.....	23,703	24,604	25,825	27,224	28,348	3.8	5.0	5.4	4.1	5
Plains.....	22,363	23,802	24,861	26,282	27,350	6.4	4.4	5.7	4.1	6
Southeast.....	21,500	22,477	23,518	24,780	25,703	4.5	4.6	5.4	3.7	8
Southwest.....	20,978	21,946	23,414	24,857	25,862	4.6	6.7	6.2	4.0	7
Rocky Mountain.....	21,841	22,930	24,259	25,756	27,072	5.0	5.8	6.2	5.1	3
Far West.....	24,380	25,456	26,671	28,168	29,727	4.4	4.8	5.6	5.5	2

<sup>r</sup> Revised.

Source: Bureau of Economic Analysis, U.S. Department of Commerce.

Table 2.—Personal Income, by State and Region, 1995-99

[Millions of dollars]

	1995	1996	1997 <sup>r</sup>	1998 <sup>r</sup>	1999 <sup>r</sup>	Percent change				Rank of percent change in 1998-99
						1995-96	1996-97	1997-98	1998-99	
<b>United States</b> .....	<b>6,192,235</b>	<b>6,538,103</b>	<b>6,928,762</b>	<b>7,383,687</b>	<b>7,783,152</b>	<b>5.6</b>	<b>6.0</b>	<b>6.6</b>	<b>5.4</b>	.....
<b>New England</b>										
Connecticut .....	104,315	109,354	116,347	122,564	128,983	4.8	6.4	5.3	5.2	21
Maine .....	25,046	26,434	27,774	29,353	30,828	5.5	5.1	5.7	5.0	27
Massachusetts .....	170,052	180,237	191,613	205,189	219,533	6.0	6.3	7.1	7.0	5
New Hampshire .....	28,650	30,228	32,389	35,194	37,372	5.5	7.1	8.7	6.2	9
Rhode Island .....	23,787	24,818	26,284	27,667	29,107	4.3	5.9	5.3	5.2	22
Vermont .....	12,449	13,073	13,752	14,648	15,371	5.0	5.2	6.5	4.9	28
<b>Mideast</b>										
Delaware .....	18,237	19,369	20,143	22,003	23,192	6.2	4.0	9.2	5.4	18
District of Columbia .....	18,217	18,517	19,081	19,665	20,686	1.6	3.0	3.1	5.2	.....
Maryland .....	135,115	140,809	148,826	158,264	167,895	4.2	5.7	6.3	6.1	10
New Jersey .....	233,209	246,659	260,727	277,757	289,503	5.8	5.7	6.5	4.2	38
New York .....	503,163	530,990	553,004	585,372	616,678	5.5	4.1	5.9	5.3	19
Pennsylvania .....	285,923	299,001	313,523	328,364	343,088	4.6	4.9	4.7	4.5	33
<b>Great Lakes</b>										
Illinois .....	304,767	322,790	340,490	361,775	377,744	5.9	5.5	6.3	4.4	36
Indiana .....	126,525	132,890	139,454	148,767	155,365	5.0	4.9	6.7	4.4	34
Michigan .....	231,594	238,095	250,211	263,252	277,296	2.8	5.1	5.2	5.3	20
Ohio .....	255,313	264,162	279,342	294,027	305,643	3.5	5.7	5.3	4.0	41
Wisconsin .....	115,960	121,864	128,912	137,056	143,811	5.1	5.8	6.3	4.9	29
<b>Plains</b>										
Iowa .....	60,171	64,696	67,930	71,080	73,499	7.5	5.0	4.6	3.4	45
Kansas .....	56,627	60,074	63,721	67,780	71,194	6.1	6.1	6.4	5.0	25
Minnesota .....	113,217	122,080	129,136	139,442	147,050	7.8	5.8	8.0	5.5	17
Missouri .....	117,640	123,992	131,131	138,128	144,235	5.4	5.8	5.3	4.4	35
Nebraska .....	36,293	39,618	40,722	42,949	45,065	9.2	2.8	5.5	4.9	30
North Dakota .....	12,243	13,607	13,330	14,521	14,773	11.1	-2.0	8.9	1.7	50
South Dakota .....	14,454	15,883	16,280	17,391	18,361	9.9	2.5	6.8	5.6	16
<b>Southeast</b>										
Alabama .....	83,903	87,221	91,283	96,257	100,452	4.0	4.7	5.4	4.4	37
Arkansas .....	45,995	48,700	51,059	53,962	56,752	5.9	4.8	5.7	5.2	24
Florida .....	333,525	355,136	377,681	401,474	419,792	6.5	6.3	6.3	4.6	32
Georgia .....	159,800	172,935	183,762	199,576	212,929	8.2	6.3	8.6	6.7	7
Kentucky .....	74,080	78,221	82,905	87,945	92,036	5.6	6.0	6.1	4.7	31
Louisiana .....	84,573	87,879	92,290	97,516	99,887	3.9	5.0	5.7	2.4	49
Mississippi .....	46,242	48,898	51,589	55,063	57,278	5.7	5.5	6.7	4.0	39
North Carolina .....	157,634	167,638	179,688	192,070	198,943	6.3	7.2	6.9	3.6	43
South Carolina .....	72,050	76,287	81,049	86,560	91,490	5.9	6.2	6.8	5.7	15
Tennessee .....	114,260	119,287	125,449	133,514	140,234	4.4	5.2	6.4	5.0	26
Virginia .....	161,442	169,938	180,226	192,429	204,736	5.3	6.1	6.8	6.4	8
West Virginia .....	32,611	33,771	35,200	36,679	37,884	3.6	4.2	4.2	3.3	46
<b>Southwest</b>										
Arizona .....	88,870	95,787	103,704	112,635	120,360	7.8	8.3	8.6	6.9	6
New Mexico .....	31,716	33,232	34,861	36,712	38,020	4.8	4.9	5.3	3.6	44
Oklahoma .....	63,333	66,289	69,952	74,133	77,077	4.7	5.5	6.0	4.0	40
Texas .....	402,097	428,726	469,205	508,636	538,345	6.6	9.4	8.4	5.8	13
<b>Rocky Mountain</b>										
Colorado .....	92,947	100,012	108,763	118,514	127,955	7.6	8.7	9.0	8.0	2
Idaho .....	22,869	24,173	25,217	26,986	28,582	5.7	4.3	7.0	5.9	11
Montana .....	16,297	16,992	17,721	18,755	19,438	4.3	4.3	5.8	3.6	42
Utah .....	37,278	40,354	43,696	46,831	49,600	8.3	8.3	7.2	5.9	12
Wyoming .....	10,293	10,609	11,434	11,966	12,660	3.1	7.8	4.6	5.8	14
<b>Far West</b>										
Alaska .....	15,513	15,762	16,465	17,167	17,704	1.6	4.5	4.3	3.1	47
California .....	771,470	812,404	862,114	924,253	991,382	5.3	6.1	7.2	7.3	4
Hawaii .....	30,202	30,393	31,209	31,815	32,653	.6	2.7	1.9	2.6	48
Nevada .....	39,377	43,331	47,254	51,976	56,127	10.0	9.1	10.0	8.0	1
Oregon .....	71,209	75,561	80,578	85,197	89,614	6.1	6.6	5.7	5.2	23
Washington .....	129,681	139,328	150,283	162,855	174,948	7.4	7.9	8.4	7.4	3
<b>BEA regions</b>										
New England.....	364,297	384,144	408,160	434,615	461,194	5.4	6.3	6.5	6.1	3
Mideast.....	1,193,865	1,255,345	1,315,305	1,391,425	1,461,043	5.1	4.8	5.8	5.0	5
Great Lakes.....	1,034,159	1,079,799	1,138,409	1,204,878	1,259,859	4.4	5.4	5.8	4.6	8
Plains.....	410,645	439,948	462,250	491,292	514,176	7.1	5.1	6.3	4.7	7
Southeast.....	1,366,116	1,445,912	1,532,182	1,633,047	1,712,414	5.8	6.0	6.6	4.9	6
Southwest.....	586,017	624,034	677,722	732,117	773,803	6.5	8.6	8.0	5.7	4
Rocky Mountain.....	179,684	192,141	206,831	223,051	238,235	6.9	7.6	7.8	6.8	2
Far West.....	1,057,453	1,116,779	1,187,903	1,273,263	1,362,427	5.6	6.4	7.2	7.0	1

<sup>r</sup> Revised.

Source: Bureau of Economic Analysis, U.S. Department of Commerce.

Note: Percent changes are calculated based on unrounded data.



**Table 3.—Population, as of July 1, by State and Region, 1995-99**

[Thousand of persons]

	1995	1996	1997	1998	1999	Percent change				Rank of percent change in 1998-99
						1995-96	1996-97	1997-98	1998-99	
<b>United States</b> .....	<b>262,803</b>	<b>265,229</b>	<b>267,784</b>	<b>270,248</b>	<b>272,691</b>	<b>0.9</b>	<b>1.0</b>	<b>0.9</b>	<b>0.9</b>	.....
<b>New England</b>										
Connecticut .....	3,265	3,267	3,269	3,273	3,282	.1	0	.1	.3	42
Maine .....	1,237	1,241	1,245	1,248	1,253	.3	.3	.2	.4	34
Massachusetts .....	6,062	6,085	6,115	6,144	6,175	.4	.5	.5	.5	31
New Hampshire .....	1,146	1,161	1,173	1,186	1,201	1.3	1.1	1.1	1.3	11
Rhode Island .....	989	988	987	988	991	-.1	-.1	.1	.3	40
Vermont .....	583	586	589	591	594	.6	.4	.3	.5	29
<b>Mideast</b>										
Delaware .....	718	727	735	744	754	1.2	1.1	1.2	1.3	12
District of Columbia .....	551	538	529	521	519	-2.4	-1.8	-1.4	-.5	.....
Maryland .....	5,024	5,057	5,093	5,130	5,172	.7	.7	.7	.8	19
New Jersey .....	7,966	8,010	8,054	8,096	8,143	.6	.6	.5	.6	24
New York .....	18,151	18,144	18,143	18,159	18,197	0	0	.1	.2	44
Pennsylvania .....	12,045	12,038	12,016	12,002	11,994	-.1	-.2	-.1	-.1	46
<b>Great Lakes</b>										
Illinois .....	11,885	11,953	12,012	12,070	12,128	.6	.5	.5	.5	32
Indiana .....	5,792	5,835	5,872	5,908	5,943	.7	.6	.6	.6	23
Michigan .....	9,660	9,739	9,785	9,820	9,864	.8	.5	.4	.4	33
Ohio .....	11,155	11,187	11,212	11,238	11,257	.3	.2	.2	.2	45
Wisconsin .....	5,137	5,174	5,200	5,222	5,250	.7	.5	.4	.5	28
<b>Plains</b>										
Iowa .....	2,841	2,848	2,854	2,861	2,869	.3	.2	.2	.3	41
Kansas .....	2,587	2,598	2,616	2,639	2,654	.4	.7	.9	.6	25
Minnesota .....	4,605	4,648	4,688	4,726	4,776	.9	.9	.8	1.0	17
Missouri .....	5,325	5,368	5,407	5,438	5,468	.8	.7	.6	.6	26
Nebraska .....	1,635	1,648	1,656	1,661	1,666	.8	.5	.3	.3	39
North Dakota .....	642	643	641	638	634	.2	-.3	-.5	-.6	50
South Dakota .....	728	731	731	731	733	.3	0	0	.3	38
<b>Southeast</b>										
Alabama .....	4,263	4,290	4,320	4,351	4,370	.6	.7	.7	.4	35
Arkansas .....	2,480	2,505	2,524	2,538	2,551	1.0	.8	.6	.5	30
Florida .....	14,185	14,427	14,683	14,908	15,111	1.7	1.8	1.5	1.4	10
Georgia .....	7,189	7,332	7,486	7,637	7,788	2.0	2.1	2.0	2.0	4
Kentucky .....	3,855	3,881	3,908	3,934	3,961	.7	.7	.7	.7	21
Louisiana .....	4,328	4,339	4,351	4,363	4,372	.2	.3	.3	.2	43
Mississippi .....	2,691	2,710	2,732	2,751	2,769	.7	.8	.7	.6	22
North Carolina .....	7,185	7,308	7,429	7,546	7,651	1.7	1.7	1.6	1.4	9
South Carolina .....	3,700	3,739	3,790	3,840	3,886	1.1	1.4	1.3	1.2	15
Tennessee .....	5,241	5,314	5,378	5,433	5,484	1.4	1.2	1.0	.9	18
Virginia .....	6,601	6,665	6,733	6,789	6,873	1.0	1.0	.8	1.2	13
West Virginia .....	1,821	1,819	1,816	1,812	1,807	-.1	-.2	-.2	-.3	48
<b>Southwest</b>										
Arizona .....	4,307	4,432	4,552	4,667	4,778	2.9	2.7	2.5	2.4	2
New Mexico .....	1,682	1,706	1,723	1,734	1,740	1.4	1.0	.6	.4	37
Oklahoma .....	3,266	3,290	3,314	3,339	3,358	.7	.7	.8	.6	27
Texas .....	18,680	19,006	19,355	19,712	20,044	1.7	1.8	1.8	1.7	6
<b>Rocky Mountain</b>										
Colorado .....	3,738	3,813	3,891	3,969	4,056	2.0	2.1	2.0	2.2	3
Idaho .....	1,165	1,188	1,211	1,231	1,252	1.9	1.9	1.7	1.7	5
Montana .....	869	877	879	880	883	.9	.2	.1	.4	36
Utah .....	1,977	2,022	2,065	2,101	2,130	2.3	2.1	1.7	1.4	8
Wyoming .....	478	480	480	480	480	.3	0	0	-.1	47
<b>Far West</b>										
Alaska .....	601	605	609	615	620	.6	.6	1.0	.7	20
California .....	31,494	31,781	32,218	32,683	33,145	.9	1.4	1.4	1.4	7
Hawaii .....	1,180	1,184	1,189	1,190	1,185	.3	.4	.1	-.4	49
Nevada .....	1,526	1,596	1,676	1,744	1,809	4.6	5.0	4.1	3.8	1
Oregon .....	3,141	3,195	3,243	3,282	3,316	1.7	1.5	1.2	1.0	16
Washington .....	5,431	5,510	5,604	5,688	5,756	1.5	1.7	1.5	1.2	14
<b>BEA regions</b>										
New England.....	13,283	13,329	13,378	13,429	13,496	.3	.4	.4	.5	6
Mideast.....	44,454	44,514	44,570	44,653	44,778	.1	.1	.2	.3	8
Great Lakes.....	43,629	43,888	44,082	44,257	44,442	.6	.4	.4	.4	7
Plains.....	18,363	18,484	18,593	18,693	18,800	.7	.6	.5	.6	5
Southeast.....	63,539	64,329	65,150	65,901	66,622	1.2	1.3	1.2	1.1	4
Southwest.....	27,935	28,434	28,945	29,453	29,920	1.8	1.8	1.8	1.6	2
Rocky Mountain.....	8,227	8,379	8,526	8,660	8,800	1.9	1.8	1.6	1.6	1
Far West.....	43,374	43,872	44,539	45,202	45,832	1.1	1.5	1.5	1.4	3

Note: Percent changes are calculated based on unrounded data.

Source: Bureau of the Census, U.S. Department of Commerce.

Table 4.—Per Capita Personal Income, by State and Region, 1997-99

	Dollars			Rank in United States			Percent of national average			Percent change, 1998-99
	1997 <sup>r</sup>	1998 <sup>r</sup>	1999 <sup>r</sup>	1997	1998	1999	1997	1998	1999	
<b>United States .....</b>	<b>25,874</b>	<b>27,322</b>	<b>28,542</b>	.....	.....	.....	<b>100</b>	<b>100</b>	<b>100</b>	<b>4.5</b>
District of Columbia .....	36,087	37,714	39,858	.....	.....	.....	139	138	140	5.7
Connecticut .....	35,596	37,452	39,300	1	1	1	138	137	138	4.9
Massachusetts .....	31,332	33,394	35,551	3	3	2	121	122	125	6.5
New Jersey .....	32,372	34,310	35,551	2	2	2	125	126	125	3.6
New York .....	30,480	32,236	33,890	4	4	4	118	118	119	5.1
Maryland .....	29,222	30,850	32,465	5	5	5	113	113	114	5.2
Colorado .....	27,950	29,860	31,546	8	7	6	108	109	111	5.6
Illinois .....	28,347	29,974	31,145	6	6	7	110	110	109	3.9
New Hampshire .....	27,607	29,679	31,114	9	9	8	107	109	109	4.8
Nevada .....	28,201	29,806	31,022	7	8	9	109	109	109	4.1
Minnesota .....	27,548	29,503	30,793	10	11	10	106	108	108	4.4
Delaware .....	27,405	29,571	30,778	11	10	11	106	108	108	4.1
Washington .....	26,817	28,632	30,392	13	12	12	104	105	106	6.1
California .....	26,759	28,280	29,910	15	14	13	103	104	105	5.8
Virginia .....	26,768	28,343	29,789	14	13	14	103	104	104	5.1
Rhode Island .....	26,631	28,012	29,377	16	15	15	103	103	103	4.9
Pennsylvania .....	26,092	27,358	28,605	18	17	16	101	100	100	4.6
Alaska .....	27,042	27,904	28,577	12	16	17	105	102	100	2.4
Michigan .....	25,570	26,807	28,113	20	19	18	99	98	98	4.9
Florida .....	25,722	26,930	27,780	19	18	19	99	99	97	3.2
Hawaii .....	26,241	26,725	27,544	17	20	20	101	98	97	3.1
Wisconsin .....	24,790	26,245	27,390	23	21	21	96	96	96	4.4
Georgia .....	24,547	26,134	27,340	25	23	22	95	96	96	4.6
Ohio .....	24,913	26,164	27,152	21	22	23	96	96	95	3.8
Nebraska .....	24,590	25,861	27,049	24	25	24	95	95	95	4.6
Oregon .....	24,845	25,958	27,023	22	24	25	96	95	95	4.1
Texas .....	24,242	25,803	26,858	28	26	26	94	94	94	4.1
Kansas .....	24,355	25,687	26,824	26	27	27	94	94	94	4.4
Wyoming .....	23,820	24,927	26,396	30	31	28	92	91	92	5.9
Missouri .....	24,252	25,403	26,376	27	29	29	94	93	92	3.8
Indiana .....	23,748	25,182	26,143	32	30	30	92	92	92	3.8
North Carolina .....	24,188	25,454	26,003	29	28	31	93	93	91	2.2
Vermont .....	23,362	24,803	25,889	33	33	32	90	91	91	4.4
Iowa .....	23,798	24,844	25,615	31	32	33	92	91	90	3.1
Tennessee .....	23,324	24,576	25,574	34	34	34	90	90	90	4.1
Arizona .....	22,781	24,133	25,189	35	35	35	88	88	88	4.4
South Dakota .....	22,275	23,797	25,045	37	36	36	86	87	88	5.2
Maine .....	22,305	23,529	24,603	36	37	37	86	86	86	4.6
South Carolina .....	21,385	22,544	23,545	38	39	38	83	83	82	4.4
North Dakota .....	20,798	22,767	23,313	45	38	39	80	83	82	2.4
Utah .....	21,156	22,294	23,288	41	42	40	82	82	82	4.5
Kentucky .....	21,215	22,353	23,237	39	40	41	82	82	81	4.0
Alabama .....	21,129	22,123	22,987	42	44	42	82	81	81	3.9
Oklahoma .....	21,106	22,199	22,953	43	43	43	82	81	80	3.4
Louisiana .....	21,209	22,352	22,847	40	41	44	82	82	80	2.2
Idaho .....	20,830	21,923	22,835	44	45	45	81	80	80	4.2
Arkansas .....	20,229	21,260	22,244	47	47	46	78	78	78	4.6
Montana .....	20,167	21,324	22,019	48	46	47	78	78	77	3.3
New Mexico .....	20,233	21,178	21,853	46	48	48	78	78	77	3.2
West Virginia .....	19,388	20,246	20,966	49	49	49	75	74	73	3.6
Mississippi .....	18,885	20,013	20,688	50	50	50	73	73	72	3.4
<b>BEA regions</b>										
New England .....	30,510	32,365	34,173	1	1	1	118	118	120	5.6
Mideast .....	29,511	31,161	32,628	2	2	2	114	114	114	4.7
Far West .....	26,671	28,168	29,727	3	3	3	103	103	104	5.5
Great Lakes .....	25,825	27,224	28,348	4	4	4	100	100	99	4.1
Plains .....	24,861	26,282	27,350	5	5	5	96	96	96	4.1
Rocky Mountain .....	24,259	25,756	27,072	6	6	6	94	94	95	5.1
Southwest .....	23,414	24,857	25,862	8	7	7	90	91	91	4.0
Southeast .....	23,518	24,780	25,703	7	8	8	91	91	90	3.7

<sup>r</sup> Revised.Note: States and regions listed based on their rank in per capita income in 1999.  
Source: Bureau of Economic Analysis, U.S. Department of Commerce.

Table 5.—Personal Income by Component, by State and Region, 1998-99

	Percent change				Percent change in personal income	Contribution to percent change in personal income (percentage points)			Dollar change (millions)			
	Personal income	Net earnings <sup>1</sup>	Dividends, interest, and rent	Transfer payments		Net earnings <sup>1</sup>	Dividends, interest, and rent	Transfer payments	Personal income	Net earnings <sup>1</sup>	Dividends, interest, and rent	Transfer payments
<b>United States</b> .....	<b>5.4</b>	<b>6.4</b>	<b>3.5</b>	<b>3.4</b>	<b>5.4</b>	<b>4.28</b>	<b>.68</b>	<b>.45</b>	<b>399,465</b>	<b>316,211</b>	<b>50,016</b>	<b>33,238</b>
<b>New England</b> .....												
Connecticut .....	5.2	6.1	3.8	2.4	5.2	4.27	.70	.27	6,419	5,230	855	334
Maine .....	5.0	6.5	2.9	2.1	5.0	4.10	.56	.36	1,475	1,203	164	107
Massachusetts .....	7.0	8.2	5.3	2.9	7.0	5.64	.97	.38	14,344	11,578	1,990	777
New Hampshire .....	6.2	6.7	6.3	2.8	6.2	4.68	1.20	.30	2,178	1,649	422	108
Rhode Island .....	5.2	5.4	6.2	3.3	5.2	3.43	1.22	.55	1,440	950	338	152
Vermont .....	4.9	6.5	-2	5.6	4.9	4.19	-.05	.79	723	614	-7	116
<b>Mideast</b> .....												
Delaware .....	5.4	6.0	5.0	2.8	5.4	4.06	1.01	.34	1,189	893	222	74
District of Columbia .....	5.2	5.9	5.4	1.2	5.2	3.93	1.10	.16	1,021	774	216	32
Maryland .....	6.1	6.8	4.5	3.8	6.1	4.83	.86	.39	9,631	7,650	1,360	621
New Jersey .....	4.2	5.5	.8	2.0	4.2	3.86	.14	.23	11,746	10,723	396	628
New York .....	5.3	6.6	2.4	3.5	5.3	4.34	.44	.57	31,306	25,411	2,575	3,320
Pennsylvania .....	4.5	4.9	3.6	4.0	4.5	3.16	.68	.64	14,724	10,390	2,226	2,108
<b>Great Lakes</b> .....												
Illinois .....	4.4	5.5	2.8	1.0	4.4	3.73	.56	.12	15,969	13,510	2,030	428
Indiana .....	4.4	4.6	4.2	3.7	4.4	3.17	.79	.48	6,598	4,713	1,168	717
Michigan .....	5.3	5.6	3.7	6.3	5.3	3.80	.69	.84	14,044	10,015	1,821	2,209
Ohio .....	4.0	4.3	4.4	1.8	4.0	2.83	.86	.25	11,616	8,334	2,537	744
Wisconsin .....	4.9	5.3	4.6	3.3	4.9	3.58	.93	.41	6,755	4,912	1,279	563
<b>Plains</b> .....												
Iowa .....	3.4	3.4	4.0	2.4	3.4	2.23	.84	.33	2,419	1,585	599	235
Kansas .....	5.0	5.5	4.2	3.8	5.0	3.71	.85	.47	3,414	2,516	577	320
Minnesota .....	5.5	6.2	4.1	3.5	5.5	4.19	.88	.39	7,608	5,837	1,227	545
Missouri .....	4.4	4.9	3.6	3.6	4.4	3.14	.75	.53	6,107	4,338	1,036	733
Nebraska .....	4.9	5.4	4.3	3.8	4.9	3.57	.88	.48	2,116	1,532	377	206
North Dakota .....	1.7	.1	6.6	1.8	1.7	.05	1.39	.29	252	8	202	42
South Dakota .....	5.6	6.4	5.4	2.3	5.6	4.02	1.24	.33	970	699	215	57
<b>Southeast</b> .....												
Alabama .....	4.4	4.8	4.2	3.0	4.4	3.11	.75	.49	4,195	2,998	722	476
Arkansas .....	5.2	5.7	6.0	2.4	5.2	3.61	1.12	.43	2,790	1,950	606	234
Florida .....	4.6	6.1	2.8	1.8	4.6	3.52	.76	.28	18,318	14,150	3,038	1,131
Georgia .....	6.7	7.9	4.0	3.3	6.7	5.62	.69	.38	13,353	11,217	1,384	751
Kentucky .....	4.7	5.2	4.4	3.0	4.7	3.32	.83	.51	4,091	2,916	729	446
Louisiana .....	2.4	2.1	3.8	2.5	2.4	1.34	.66	.43	2,371	1,309	644	417
Mississippi .....	4.0	4.2	5.1	2.5	4.0	2.72	.83	.46	2,215	1,500	459	255
North Carolina .....	3.6	6.0	-5.1	4.2	3.6	4.00	-.99	.57	6,873	7,675	-1,903	1,102
South Carolina .....	5.7	6.1	5.4	4.4	5.7	4.02	1.00	.67	4,930	3,483	863	584
Tennessee .....	5.0	5.4	4.2	4.3	5.0	3.68	.69	.67	6,720	4,911	920	890
Virginia .....	6.4	7.3	4.4	3.9	6.4	5.18	.83	.38	12,307	9,973	1,603	730
West Virginia .....	3.3	3.3	5.8	1.2	3.3	1.98	1.03	.28	1,205	726	378	101
<b>Southwest</b> .....												
Arizona .....	6.9	7.6	5.4	5.2	6.9	5.08	1.08	.71	7,725	5,717	1,212	796
New Mexico .....	3.6	3.6	2.9	4.4	3.6	2.32	.57	.67	1,308	851	210	247
Oklahoma .....	4.0	4.6	1.9	3.7	4.0	3.04	.35	.58	2,944	2,251	263	431
Texas .....	5.8	6.9	3.0	3.3	5.8	4.97	.48	.39	29,709	25,296	2,447	1,966
<b>Rocky Mountain</b> .....												
Colorado .....	8.0	9.2	4.9	4.4	8.0	6.64	.93	.40	9,441	7,865	1,100	476
Idaho .....	5.9	7.3	2.7	3.8	5.9	4.89	.53	.50	1,596	1,319	143	134
Montana .....	3.6	5.2	2.9	-1.0	3.6	3.12	.69	-.17	683	586	128	-31
Utah .....	5.9	6.3	5.7	3.4	5.9	4.56	1.00	.35	2,769	2,135	470	165
Wyoming .....	5.8	6.7	5.2	2.6	5.8	4.11	1.36	.32	694	493	163	38
<b>Far West</b> .....												
Alaska .....	3.1	1.5	4.7	8.9	3.1	1.02	.84	1.27	537	174	144	218
California .....	7.3	8.6	4.2	4.3	7.3	5.94	.81	.51	67,129	54,927	7,465	4,737
Hawaii .....	2.6	2.5	2.9	3.0	2.6	1.72	.56	.36	838	546	177	115
Nevada .....	8.0	9.3	5.7	4.6	8.0	6.21	1.31	.48	4,151	3,226	679	248
Oregon .....	5.2	5.8	3.3	5.2	5.2	3.72	.76	.70	4,417	3,171	645	599
Washington .....	7.4	8.7	4.8	4.1	7.4	6.01	.92	.50	12,093	9,783	1,501	809
<b>BEA regions</b> .....												
New England .....	6.1	7.1	4.6	2.8	6.1	4.88	.87	.37	26,579	21,223	3,762	1,593
Mideast .....	5.0	6.0	2.7	3.4	5.0	4.01	.50	.49	69,618	55,840	6,997	6,782
Great Lakes .....	4.6	5.1	3.7	3.0	4.6	3.44	.73	.39	54,981	41,484	8,835	4,662
Plains .....	4.7	5.1	4.1	3.3	4.7	3.36	.86	.44	22,884	16,514	4,233	2,138
Southeast .....	4.9	5.9	2.9	3.0	4.9	3.85	.58	.44	79,367	62,809	9,443	7,115
Southwest .....	5.7	6.6	3.3	3.7	5.7	4.66	.56	.47	41,686	34,115	4,131	3,440
Rocky Mountain .....	6.8	8.0	4.6	3.3	6.8	5.56	.90	.35	15,184	12,398	2,004	782
Far West .....	7.0	8.2	4.3	4.4	7.0	5.64	.83	.53	89,164	71,827	10,611	6,726

1. Net earnings is earnings by place of work -- the sum of wage and salary disbursements (payrolls), other labor income, and proprietors' income -- less personal contributions for social insurance plus an adjustment to convert earnings by place of work to a place-of-residence basis.

Note: Estimates may not add to totals because of rounding. Percent changes are calculated based on unrounded data.

Source: Bureau of Economic Analysis, U.S. Department of Commerce.

**Table 6.—Revisions to Personal Income for States and Regions for 1997-99**  
[Millions of dollars]

	Revised			Percent revision		
	1997	1998	1999	1997	1998	1999
<b>United States .....</b>	<b>6,928,762</b>	<b>7,383,687</b>	<b>7,783,152</b>	<b>-0.2</b>	<b>0.4</b>	<b>0.1</b>
<b>New England .....</b>	<b>408,160</b>	<b>434,615</b>	<b>461,194</b>	<b>-5</b>	<b>0</b>	<b>-3</b>
Connecticut .....	116,347	122,564	128,983	-1	.3	.3
Maine .....	27,774	29,353	30,828	-4	.1	-1.4
Massachusetts .....	191,613	205,189	219,533	-8	-3	-5
New Hampshire .....	32,389	35,194	37,372	-5	.7	.7
Rhode Island .....	26,284	27,667	29,107	-8	-9	-1.2
Vermont .....	13,752	14,648	15,371	-1	.8	0
<b>Mideast .....</b>	<b>1,315,305</b>	<b>1,391,425</b>	<b>1,461,043</b>	<b>-3</b>	<b>.2</b>	<b>-3</b>
Delaware .....	20,143	22,003	23,192	-7	.6	.3
District of Columbia .....	19,081	19,665	20,686	2.4	3.6	4.3
Maryland .....	148,826	158,264	167,895	.4	1.0	.9
New Jersey .....	260,727	277,757	289,503	-6	-2	-1.5
New York .....	553,004	585,372	616,678	-2	.4	-2
Pennsylvania .....	313,523	328,364	343,088	-5	-4	-2
<b>Great Lakes .....</b>	<b>1,138,409</b>	<b>1,204,878</b>	<b>1,259,859</b>	<b>-5</b>	<b>.1</b>	<b>.2</b>
Illinois .....	340,490	361,775	377,744	-4	.4	-4
Indiana .....	139,454	148,767	155,365	-7	.1	.2
Michigan .....	250,211	263,252	277,296	-8	-3	1.0
Ohio .....	279,342	294,027	305,643	-3	.4	.3
Wisconsin .....	128,912	137,056	143,811	-6	-1	-1
<b>Plains .....</b>	<b>462,250</b>	<b>491,292</b>	<b>514,176</b>	<b>-3</b>	<b>.6</b>	<b>.2</b>
Iowa .....	67,930	71,080	73,499	-4	.4	-4
Kansas .....	63,721	67,780	71,194	-2	.6	.7
Minnesota .....	129,136	139,442	147,050	0	.8	.6
Missouri .....	131,131	138,128	144,235	-5	1.0	.7
Nebraska .....	40,722	42,949	45,065	-7	-2	-1.4
North Dakota .....	13,330	14,521	14,773	-4	-5	-9
South Dakota .....	16,280	17,391	18,361	-6	.3	-2
<b>Southeast .....</b>	<b>1,532,182</b>	<b>1,633,047</b>	<b>1,712,414</b>	<b>-1</b>	<b>.7</b>	<b>0</b>
Alabama .....	91,283	96,257	100,452	-6	.3	.2
Arkansas .....	51,059	53,962	56,752	-6	.4	.6
Florida .....	377,681	401,474	419,792	.3	.3	-9
Georgia .....	183,762	199,576	212,929	-2	1.1	.5
Kentucky .....	82,905	87,945	92,036	-3	.8	.3
Louisiana .....	92,290	97,516	99,887	-2	.7	.2
Mississippi .....	51,589	55,063	57,278	.1	1.2	.9
North Carolina .....	179,688	192,070	198,943	-1	1.1	-8
South Carolina .....	81,049	86,560	91,490	-1	.8	.2
Tennessee .....	125,449	133,514	140,234	-5	.6	0
Virginia .....	180,226	192,429	204,736	-2	1.0	1.0
West Virginia .....	35,200	36,679	37,884	-1	.3	.4
<b>Southwest .....</b>	<b>677,722</b>	<b>732,117</b>	<b>773,803</b>	<b>.7</b>	<b>1.2</b>	<b>.8</b>
Arizona .....	103,704	112,635	120,360	-3	-3	-5
New Mexico .....	34,861	36,712	38,020	-3	.1	-1.0
Oklahoma .....	69,952	74,133	77,077	.1	1.1	.7
Texas .....	469,205	508,636	538,345	1.0	1.7	1.3
<b>Rocky Mountain .....</b>	<b>206,831</b>	<b>223,051</b>	<b>238,235</b>	<b>-3</b>	<b>-1</b>	<b>-6</b>
Colorado .....	108,763	118,514	127,955	-4	-4	-4
Idaho .....	25,217	26,986	28,582	-9	-7	-2.6
Montana .....	17,721	18,755	19,438	.2	.4	-1.3
Utah .....	43,696	46,831	49,600	-2	.2	-3
Wyoming .....	11,434	11,966	12,660	.9	2.5	1.5
<b>Far West .....</b>	<b>1,187,903</b>	<b>1,273,263</b>	<b>1,362,427</b>	<b>-2</b>	<b>.4</b>	<b>.3</b>
Alaska .....	16,465	17,167	17,704	.2	.3	.2
California .....	862,114	924,253	991,382	-1	.4	.3
Hawaii .....	31,209	31,815	32,653	-2	-1	-1.1
Nevada .....	47,254	51,976	56,127	-1	2.1	2.2
Oregon .....	80,578	85,197	89,614	-6	.2	-4
Washington .....	150,283	162,855	174,948	-7	-3	.3

Source: Bureau of Economic Analysis, U.S. Department of Commerce.